

SKRADIN BASE

**ARRIVAL &
PROCEDURE
INFO**



www.istion.com

welcome aboard!

BASE MANAGER:

Mr. Tonko Palinic
GSM +385 98588 680

Check-in time: **17.00pm**
Check-in Base: **Skradin**

Check-out time: **09.00am**
Check-out Base: **Skradin**

CHARTER BASE:

GSM +385 91615 2170

**[Yacht should be returned to Base, the day before
the end of the charter period, the latest by 18.00pm]**



**ISTION YACHTING
SKRADIN BASE**

**ACI MARINA SKRADIN-
CROATIA, OBALA BANA
PAVLA SUBICA 18**

MEETING POINT:
ISTION BASE OFFICE

→ Visit our blog

for itineraries, music,
recipes & more...



**HEADING TO
OUR BASE**



ISTION YACHTING HEADQUARTERS: 1, Poseidonos Ave., 174 55 Alimos,
Athens-Greece, **tel** +30 210 9811 515, **fax** +30 210 9811 990

CHARTER MANAGER: Ms. Sapfo Kleidi, **GSM** +30 6945 768 180

▶ PRIOR TO YOUR TRIP

Kindly do make sure we have received the following documents - which are required during check-in - at least two weeks before embarkation and we will take care of paper formalities and save you from facing any inconvenience or delay during check-in procedure:

Passport Copies

Skipper, Co-Skipper & Charterer if different person from the above

Sailing & VHF License

At least one person (the Skipper) possesses a valid nautical & VHF license. Skipper must have the originals on board, so remember to take them with you!

Crew list

An online link has already been provided to you via e-mail. We need to receive the completed crew list with full names, passport numbers, dates of birth, nationality, gender & Skipper's cell phone number.

Arrival info

Arrival date & time, Airline, Flight number, Departure airport, hotel you may be staying in Croatia before your charter

Departure info

Scheduled departure date & time

Special requirements

or extras (such as provisioning list, etc.) if any

Please help us best process your documentation by stating your Istion booking reference code in your e-mail or fax subject.

▶ ARRIVAL IN SKRADIN

Transfer to base

The nearest airports to Skradin are those in Split & Zadar, both approximately a 50-minute drive away by car or taxi. In case you are facing difficulty finding a taxi, you may contact the Taxi Company at +385915134660 (WhatsApp) to arrange a pickup, or call our Base Manager to assist you. Ask the Taxi driver to take you to ACI MARINA SKRADIN. Once you arrive at the marina, you will find the yachts at Pier B and our staff will be waiting for you at the Istion Base Office, which is situated across the yachts.

Private Transfer

Should you require a Private Transfer, feel free to let us know in advance and we will provide you with quotes from reliable transfer service providers.

▶ ARRIVAL TO BASE

The Base Manager & staff have been informed about your arrival details, and they will be ready to welcome you at the meeting point, the Istion Base Office located at Pier B, as indicated on the above map.

IN CASE OF LATE ARRIVAL

- **Our staff will wait for you** until approximately 20.00 hrs at night.
- **Your yacht will be ready & unlocked for you.** Aboard you will find a welcoming message providing you with basic instructions for your first night aboard. Should you face any difficulty or problem, do not hesitate to contact our Base Manager (available to assist you on a 24/7 basis).
- **Check-in procedure will take place the next morning.**

➤ CHECK-IN PROCEDURE

Check-in procedure has to be attended by and performed with Skipper & Co-Skipper only.
Check-in procedure involves 3 steps:

01. Formalities & Documentation

Before check-in, you will need to present the required documents at Istion's Welcome Desk (original Sailing & VHF licenses, as well as the skipper's/charterer's passport or a copy of their ID) and complete any pending payments (e.g., security deposit and any extras).

SECURITY DEPOSIT

As stated in the booking terms & conditions please note that Security deposit is to be paid via Master or Visa credit card only, no debit cards or personal checks accepted.

02. Inventory list inspection

The Skipper and Co-Skipper will be provided with an inventory list so to check and confirm inventory delivered with the yacht. During check-in, the yacht should be free of all luggage and provisions.

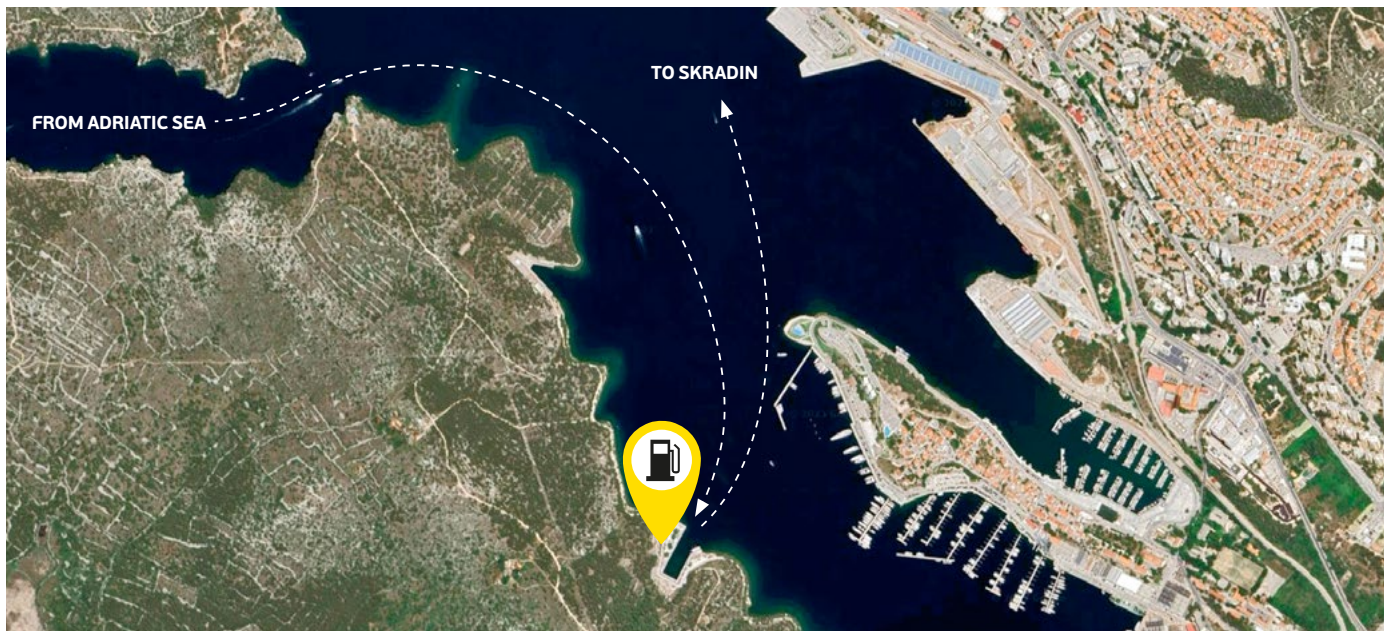
03. Technical inspection

Yacht condition is checked with our staff who will demonstrate basic functional / operational features of the yacht and her equipment.

➤ CHECK-OUT PROCEDURE

Yacht should be returned to Base, a day before the end of the charter period, latest by 18.00pm. To help us be of better service please advise our Base Manager of your **expected arrival time to base, in advance.** **Please note that the gem of Skradin is an environmental sanctuary hence refueling there is not permitted. Therefore, you need to refuel at Sibenik before reaching Skradin.**

You may refuel at: LUKOIL, Uvala Duboka, 22000, Sibenik, tel: +38 5916 999 209



Once you are done refueling, you can sail towards Skradin Marina (approximately 15 n.m from Sibenik). Our staff will be waiting for you where the yacht was moored on the day you departed from the marina. If during your trip you have noticed any sort of problem or malfunction of the yacht we would be very grateful if you could advise our staff. It is essential to maintaining a high quality fleet of yachts for you, that you provide us with any remarks regarding the function and the condition of our vessels, even minor ones, as we believe that detail makes the difference.

During check-out you are kindly asked to allow our staff to come aboard and inspect the yacht and her equipment; your presence is not mandatory so you will not be wasting any time on this. This inspection is detailed, as we need to assure that the yacht will be in perfect condition, not lacking any inventory, for the following clients chartering her after you. After every charter, the yacht is also inspected underwater by the diver so as to avoid any inconvenience.










▶ GENERAL INFORMATION

Marina location & services

Picturesque Skradin is located about 12km from the city of Sibenik. This romantic small town of mythical beauty carries a rich history & culture, dating back to the Luburnians and then it had the name Scardona. Within reach of the Medieval fortress of Turina (built in the late 13th century) can be considered as the entrance to Krka National Park, 109km² of exceptional natural value and famous for the magical Skradinski Buk & Roski Slap Waterfalls.

Visitors arriving at the marina have the opportunity to wander through the charming paved alleyways, do their shopping, taste the famous Skradin risotto in one of the Dalmatian-Mediterranean Skradin's restaurants and come into direct contact with the customs and traditions of the area. The Historic Car and Industrial Heritage Museum within walking distance of the center, is also an interesting place to visit. Near the marina, you can find many kinds of shops and services while our base staff is always there to assist you finding anything you may require.

In the marina

 Sanitary (WC/showers)	 Adapted Sanitary Facilities	 WiFi	 Restaurant & Bistrot
 Grocery Shop	 ATM	 Rent a bike	 Playground
 Reception			

Typical itineraries

Our suggested route to the north of Skradin involves exploring the enchanting islands of the Kornati Archipelago, the southernmost of which make up the Kornati National Park. These largely uninhabited islands offer stunning rock cliffs with crystal clear waters inviting you to swim and snorkel for hours on end. For those who can drag themselves away from the water, the islands also offering many options for hiking and visiting landmarks including the Byzantine fortress of Tureta which was built during the 6th century and the Church of Gospe from the 16th century.

To the south of Skradin lie the islands off the coast of the city of Split. The islands also offer a much different experience from those to the north in Kornati being larger and inhabited with historic villages waiting to be explored. Highlights include the islands of Hvar, Brac and Vis but there are many other options for those with specific interests or tastes. Our charter team is always happy to help plan your perfect sailing holiday through the Dalmation Coast, simply contact us for our recommendations!

WARNING!
DO NOT PASS
ŽDRELAC BRIDGE



SKRADIN BASE

ARRIVAL & PROCEDURE INFO



Below you may find indicative itineraries - subject to change according to weather conditions & only feasible weather permitting:

Two weeks itinerary

DAY	LOCATION	DISTANCE
01 Saturday	ACI Marina Skradin (17:00)	Check in
02 Sunday	Primosten	21 n.m
03 Monday	Solta island	17 n.m
04 Tuesday	Vis island (Komiza)	24 n.m
05 Wednesday	Hvar island (Stari Grad)	20 n.m
06 Thursday	Korcula island (main port)	40 n.m
07 Friday	Mljet island (National park)	20 n.m
08 Saturday	Peljesac (Loviste bay)	20 n.m
09 Sunday	Hvar island (Palmizana)	25 n.m
10 Monday	Brac island (Milna)	18 n.m
11 Tuesday	Trogir	12 n.m
12 Wednesday	Rogoznica	20 n.m
13 Thursday	Vodice	28 n.m
14 Friday	Sibenik rever Krk - Skradin	27 n.m
15 Saturday	ACI Marina Skradin (09:00)	Check out

One week itinerary

DAY	LOCATION	DISTANCE
01 Saturday	ACI Marina Skradin (17:00)	Check in
02 Sunday	Primosten	21 n.m
03 Monday	Solta island	17 n.m
04 Tuesday	Hvar island-Palmizana	20 n.m
05 Wednesday	Brac island (Milna)	8 n.m
06 Thursday	Rogoznica	25 n.m
07 Friday	Sibenik rever Krk - Skradin	27 n.m
08 Saturday	ACI Marina Skradin (09:00)	Check out

We wish you a wonderful sailing vacation!

THE ISTION YACHTING TEAM